

# IQ Ultimate™

Water resistant, elastic & transparent

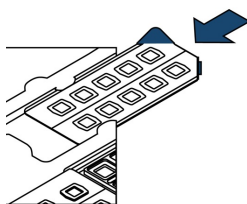


The patient friendly Patch Test Chamber  
that permits normal daily activities  
Based on the widely used leak free IQ Ultra™  
closed-cell system

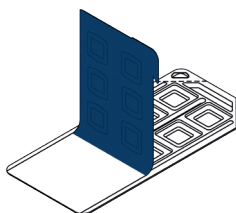


CHEMOTECHNIQUE  
DIAGNOSTICS

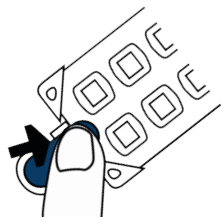
# Patch Test Instructions for IQ Ultimate™



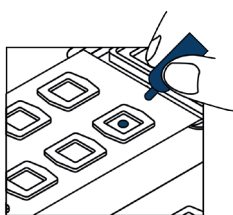
1. Break the perforation of the corner(s). If the Application Device (AP-P) is used: slide the IQ Ultimate™ unit into the device.



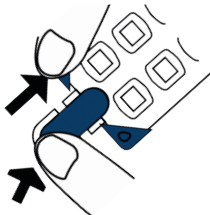
2. Pull back the tape gently until all chambers are revealed. Do not detach the tape from the plastic cover.



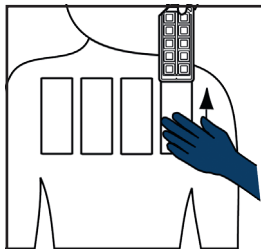
3. If the Application Device (AP-P) is used: attach the tape to the device by pressing the clip.



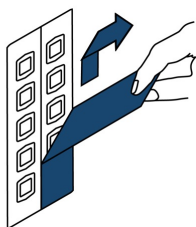
4. Apply the test preparations starting with the first hapten in the lower left chamber. Lower left = upper left on the patient.



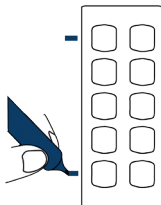
5. If the Application Device (AP-P) is used: detach the IQ Ultimate™ unit from the clip. Remove the unit from the device.



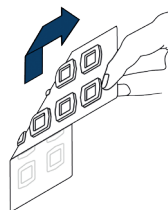
6. Remove the corner(s) and apply the unit onto the back. Press with the palms on the tape for about 5 seconds.



7. When all test units have been applied, remove the topline with a gentle diagonal motion.



8. Mark, to the left of the tape, the first and the 5th chamber using the Chemo Skin Marker™.



9. After about 48 hours: Remove the patches with a rapid diagonal motion to minimize patient discomfort.

# General considerations

## Applying the patch test haptens

When applying haptens in petrolatum, dispense a string of around 5-6 mm into the test chamber (about 25 µl).

When applying liquid haptens, apply a drop of the test solution to the filter paper in the chamber (about 25 µl). The amount should be just enough to properly moisten the filter paper.

## Preloading

Most of the haptens can be preloaded on IQ Ultimate for up to two weeks. If preloading of the chamber is done for storage in the refrigerator, do not preload liquid haptens and volatile substances such as acrylates or fragrances.

## Applying the patch test units on the patient

When applying the test patches on the patient, use if possible the upper part of the patients back, and avoid applying patches to the midline and the scapula. If several test series are applied, 2 horizontal rows of 4-5 units per row can be applied across the back. In some cases other areas of the body like the upper part of the arms may be used. If the patient's skin is oily you can clean it gently with some ethanol. Unless the patient has very dry or oily skin there is no need to put on extra reinforcement tape to secure the patches. Do not put any test units under a brassiere shoulder band which can cause dislocation of the test units. Please note; press the tape with the palm of your hand for about 5 seconds. The pressure and heat will enhance adhesion. To mark on top of the thin film, please use a permanent marker. **The water resistant and elastic features allow the patient to perform normal daily activities, including work, exercise and taking showers.**

## Precautions


The patient should not take any cortisone or medications altering the immune system during the test, avoid taking showers and avoid exposure of the back to the sunlight.

## Record form

Make a record on a record form of the numbers and names of each hapten. For patch record forms, visit our website [www.chemotechnique.se](http://www.chemotechnique.se) where forms for all series are available under the section "Patch Testing".

## Patient information sheet

Patient information sheets are available for each hapten, explaining where the substance can be found and if there are some known synonyms of the substance.

Visit [www.chemotechnique.se](http://www.chemotechnique.se) to get a free account, login, go to the specific hapten and press the  -button "Patient Info" to get a printable copy.

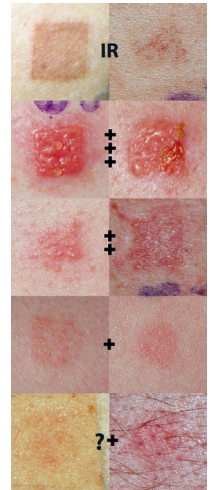
For patent information visit [www.chemotechnique.se](http://www.chemotechnique.se).

# Reading the results/interpretation

After about 48 hours the patch test units are removed. Visual imprints on the skin from each chamber + a slight erythema from the frames should be visible as a sign of good occlusion. Reading of the test is preferably performed at day 3 or 4 plus at day 7 after test application for haptens that may show delayed reactions. Some clinics prefer to add an initial reading about 30 minutes after the tape units have been removed. At that point possible skin irritation from the foam frames should have subsided in the normal case. At day 3, a weak erythema from the frames might be present in patients with sensitive skin.

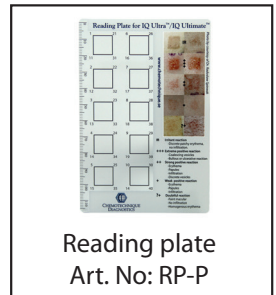
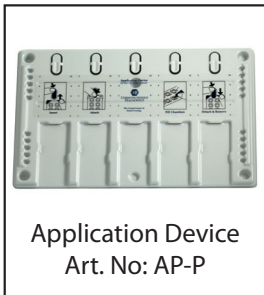
Use the **IQ Ultra/Ultimate Reading Plate** to facilitate the reading. For the interpretation of the test result the following scheme can be used:

- **IR Irritant reaction**
  - Discrete patchy erythema without infiltration.
- **+++ Extreme positive reaction**
  - Coalescing vesicles
  - Bullous or ulcerative reaction
- **++ Strong positive reaction**
  - Erythema                    -Infiltration
  - Papules                    -Discrete vesicles
- **+ Weak positive reaction**
  - Erythema                    -Infiltration
  - Papules
- **?+ Doubtful reaction**
  - Faint macular                    -No infiltration
  - Homogenous erythema



*Photo by courtesy of Dr. Radoslaw Spienak*

## Other important products to simplify Patch Testing



Revised July 2015

Developed and produced in Sweden by  
**CHEMOTECHNIQUE DIAGNOSTICS**  
Modemgatan 9 | 235 39 Vellinge | Sweden  
[www.chemotechnique.se](http://www.chemotechnique.se)